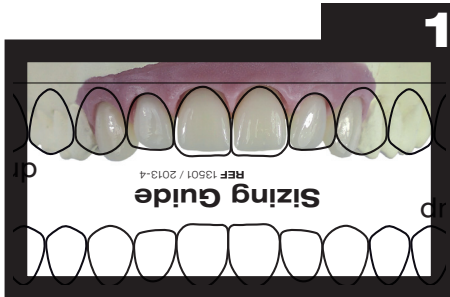


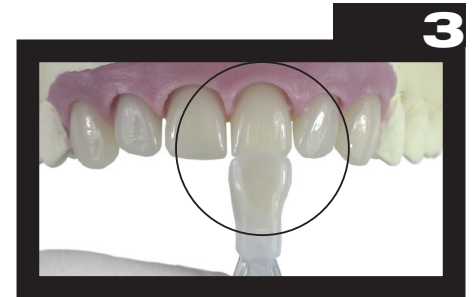
Step by Step



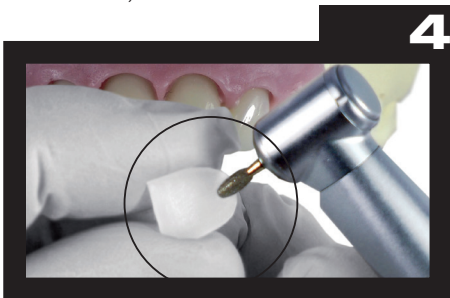
1
Select size for edelweiss VENEER using edelweiss Sizing Guide. (single or combined VENEER Sizes)



2
Select the dentin shade at cervical area with shade guide.



3
Placing the enamel VENEER shell - over the dentin core. (for light refraction place glycerine within enamel shell first)



4
Sharpen the marginal edges and roughen inner surface of the edelweiss VENEER.



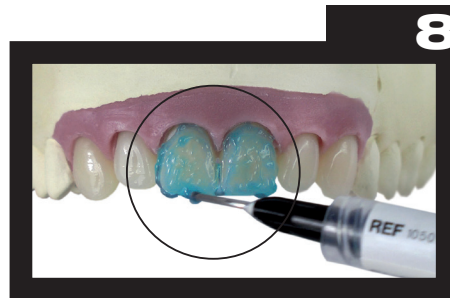
5
Adapt the fit and shape along the gingival line.



6
Minimally invasive tooth preparation.



7
Trial fit visualization of edelweiss VENEERS teeth 11 & 21. (facial view)



8
Using Etchant Gel. (enamel 30-60 sec.; dentin 15 sec. - afterwards rinse for 20 sec.)



9
Separate teeth temporarily and place matrix bands. Apply Dentin/Enamel Bond onto tooth preparation. Massage for 20 sec. Gently air-dry for 2 sec.



10
Light cure for 30 sec.



11
Apply edelweiss VENEER Bond onto inner surface of edelweiss VENEER - 30 sec.



12
Light cure for 20 sec.



13
Optional: Characterization using edelweiss Composite Flow. (Mamelon, dark cervical) Light cure for 20 sec.



14
Clean finger with isopropyl alcohol wipes.



15
Dispense 1 cm strip of edelweiss Nano-Hybrid Composite onto finger tip.



16
Shape Nano-Hybrid Composite into a small, round ball.



17
Place and press Nano-Hybrid Composite into concave surface of edelweiss VENEER.



18
Adapt Nano-Hybrid Composite into edelweiss VENEER.



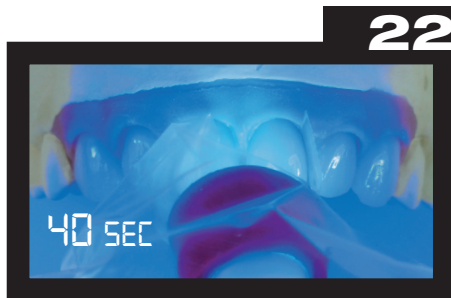
19
Position and cement edelweiss VENEER into place. **TIP:** Reduce surgical light.



20
Contour excess edelweiss Nano-Hybrid Composite.



21
Remove excess edelweiss Nano-Hybrid Composite.



22
After positioning light cure palatal and facial side of edelweiss VENEER for 40 sec.



23
Finish cervical margins using fine finishing diamonds. (40 μ m / 8 μ m).



24
Finish incisal edge using fine finishing diamonds. (40 μ m / 8 μ m)



25
Finish interproximal margins using fine finishing diamond. (40 μ m / 8 μ m)



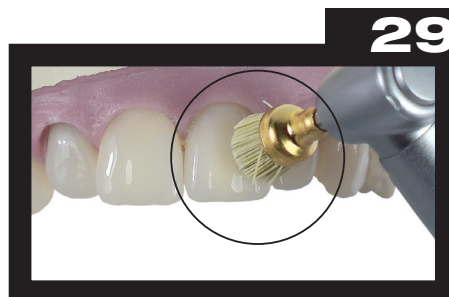
26
Finish interproximal areas using finishing strips.



27
Polish interproximal areas using interproximal polishing strips.



28
Polish edelweiss VENEER using silicone rubber polishers.



29
Polish edelweiss VENEER using polishing brush.



30
Final postoperative situation.