

## DIRECT SYSTEM

# Pre- & Clinical-Treatment



**Select size for edelweiss PEDIATRIC CROWN using edelweiss Sizing Guide.**  
(single or combined PEDIATRIC CROWN Sizes)



**For increasing the approximal area, just roughen the surface of the PEDIATRIC CROWN with a diamond bur.**



**For cleaning the smearlayer, it is possible to use 37 % phosphoric acid.**



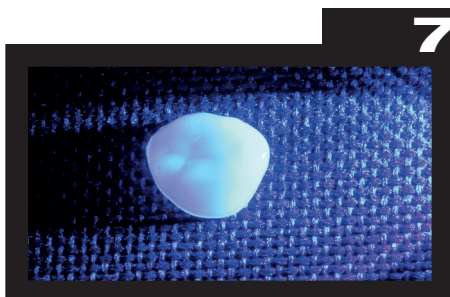
**Bonding with edelweiss VENEER Bond, compatible Bonding for all edelweiss products.**



**Light-curing of the edelweiss VENEER Bond for 20 Seconds.**



**Building up the approximal area with edelweiss NANO-HYBRID COMPOSITE. This is the same composite for cementing the PEDIATRIC CROWNS intraoral.**



**Light-curing of the composite-building-up for 30 seconds.**



**Polishing with special polisher, begin with the rough polisher, after this using the fine polisher for high shining.**

# Step by Step

**9**



Enamel etching 15 seconds, dentin 7 seconds.

**10**



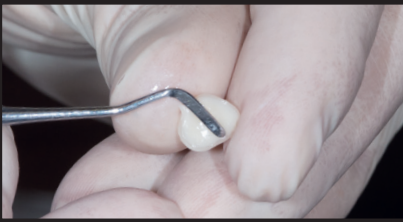
Situation with retraction and previous carious elimination.

**11**



Bonding 10 seconds.

**12**



edelweiss NANO-HYBRID COMPOSITE for adhesion edelweiss PEDIATRIC CROWN.

**13**



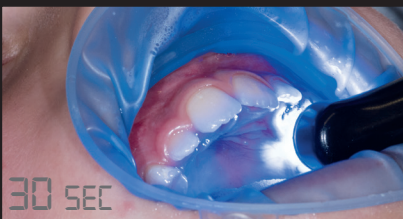
Application of edelweiss PEDIATRIC CROWN.

**14**



Position of edelweiss PEDIATRIC CROWN, excess composite removed.

**15**



30 seconds light-curing (depending on light power).

**16**



Finishing.

**17**



Polishing with special polisher, begin with the rough polisher, after this using the fine polisher for high shining.

**18**



Finish.