

# edelweiss CAD/CAM BLOCKs

## Step by Step

### TOOTH PREPARATION



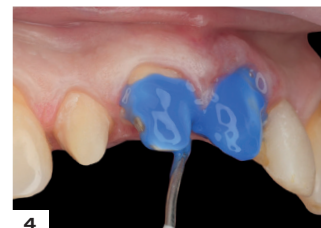
1  
Prepared teeth after removal of old ceramic restorations.



2  
Occlusal view of prepared anterior teeth.



3  
Try in of crown.



4  
Etching with 37% phosphoric acid.



5  
Rinse thoroughly with water to remove etchant.



6  
Application of adhesive bonding agent to tooth surface.



7  
Gently air dry.

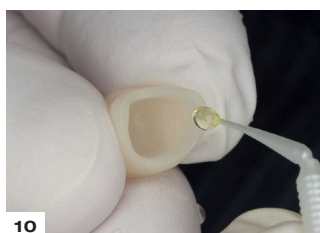


8  
Light-cure for 20 seconds.

### CROWN PREPARATION & PLACEMENT



9  
Milling of the Block to make the final crown.



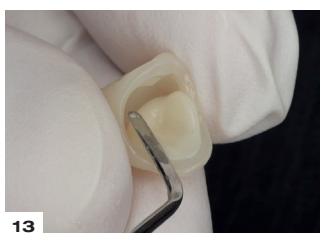
10  
Application of edelweiss Bond onto the inner surface of crown.



11  
Light-cure for 10 seconds.



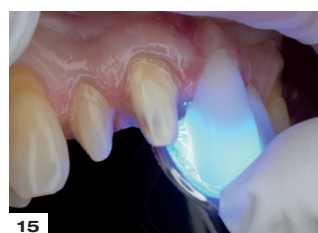
12  
Tooth shade matched using appropriate composite color.



13  
Placing composite evenly into the crown - ready for placement.



14  
Placing crown and removal of excess material at the marginal area.



15  
Final light-cure for 20 seconds at each side followed by finishing marginal edges with diamond bur and polishers.

# edelweiss CAD/CAM BLOCKs

## Step by Step

### VENEER PREPARATION & PLACEMENT



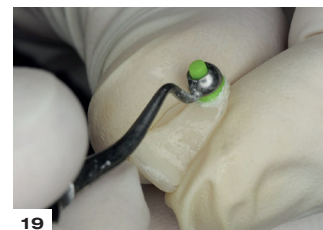
**16** Occlusal view of prepared lower teeth.



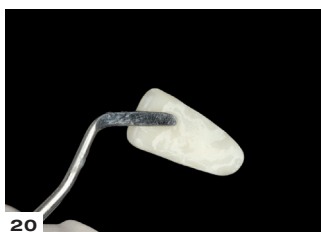
**17** Bonding with adhesive bonding agent, air dry and light-cure for 20 seconds.



**18** Placing a thin layer of edelweiss Bond on the veneer and light-cure for 10 seconds.



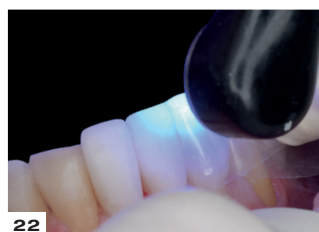
**19** Placing composite using appropriate composite color.



**20** Prepared veneer filled with composite, ready for placement.



**21** Placement of Veneer.



**22** Light-cure for 20 seconds from each side.



**23** Finishing with fine diamond bur and polishers.



One Session  
Change for a lifetime ...

YESTERDAY

TODAY

