

edelweiss CAD/CAM BLOCKs

Step by Step

TOOTH PREPARATION



1 Pre-op, non-prep.



2 Try in of veneer.



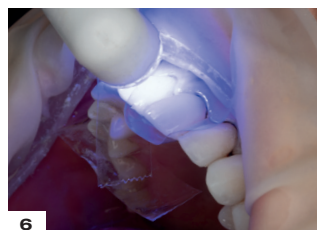
3 Etching with 37 % phosphoric acid.



4 Rinse thoroughly with water to remove etchant.



5 Application of adhesive bonding agent to tooth surface. Gently air dry.



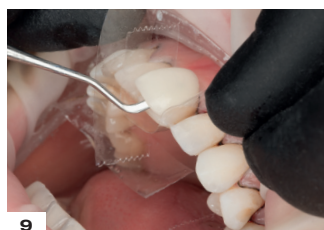
6 Light-cure for 20 seconds.



7 Placing a thin layer of edelweiss Bond on the veneer and light-cure for 10 seconds.



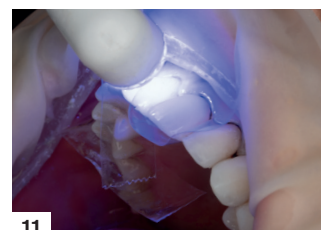
8 Evenly adapt the Nano-Hybrid Composite within the veneer using an instrument (spatula).



9 Placing veneer.



10 Removal of excess material at the marginal area.



11 Light-cure for 20 seconds.



12 Finishing



13 Retraction cord removal.



14 Finishing strip



15 Post-op